

# Langtree Parish Magazine



Welcome to the Spring edition of our magazine.

In the last magazine we mentioned that we were on Facebook. We are also pleased to announce we'll be launching the new Langtree Parish website this month - we are hoping to be live in time for the next council meeting on the 8th February. The new website address is:- **[www.langtree.news](http://www.langtree.news)**

The idea is that this will be an extension of the parish magazine, with links to other clubs and organizations within the parish, an events calendar and also areas where all parishioners can contribute. Once we've launched please take a look and email the magazine with any feedback good or bad, that also goes for the magazine too - at the end of the day they are there for you to enjoy.

There are so many of you that help with the magazine, be it contributions, printing, folding and delivering - with this in mind the magazine team would like to say a huge thankyou to everyone involved.

We would like to update contact details of everyone involved (even we don't know who delivers some of the magazines once we drop them off at local points)

So if you currently deliver please get in touch either by email or phone - 601797 - we'd like to arrange a get together of the team to discuss plans going forward.

Are there any suggestions regarding what you'd like to see in future editions of the magazine or website? Do you have anything to contribute or do you want to advertise in the magazine or on the website? Contributions could include:

- What you did on your holidays
- An achievement you'd like to share
- A review of an event you attended
- A charity you support
- A photograph you like
- A recipe

Don't be shy, please drop us a line at [magazine@langtree.net](mailto:magazine@langtree.net).

Many Thanks - The Magazine Team.

## **Langtree Rainfall**

From Joan Lampard

	2013 (mm)	2014 (mm)	2015 (mm)	2016 (mm)	2017 (mm)
Jan	142	246	212	211	106
Feb	55	166	84	153	85
Mar	97	63	63	99	118
Apr	27	79	37	49	44
May	81	118	94	57	42
Jun	41	64	60	108	120
Jul	26	44	106	30	93
Aug	88	127	142	65	97
Sep	63	9	101	109	127
Oct	172	113	58	51	72
Nov	116	97	179	141	126
Dec	180	172	163	47	163

	MM	Inches
2010	859	34.00
2011	955	38.2
2012	1560	62.40
2013	1089	44
2014	1298	51.1
2015	1299	51
2016	1132	45
2017	1193	47

**[www.langtree.news](http://www.langtree.news)**

**Next Deadline 5th May 2018 for Summer Edition**

## Langtree Chapel News

I hope you all had a lovely Christmas. We celebrated at the chapel with a Carol Service on Sunday December 24th. This was a very relaxed service with carols and readings followed by seasonal refreshments in the Sunday School. Our collection for the day was donated to the Freedom Church Social Project in Barnstaple (They provide meals and support for the homeless).

As I'm writing this article we are preparing for a United Service with Parkham Chapel. The worship will follow a slightly different format and include some modern songs followed by a bring and share lunch.

We now turn our thoughts to Spring and the hope of some better weather and brighter days. In the Church we start preparing for Easter and the hope that this brings. We are holding a series of Lent reflections on Thursday evenings 7.15pm at our meal and Bible study evenings. Please feel free to join us (601350 for further details).



I haven't heard where our Shoeboxes went in December but will keep you posted (I usually get an email at the end of Jan/beginning of Feb to let me know their destination). I am sure they brought much pleasure to their recipients. Thank you once again to everyone who helped in any way.

Sunday School continues with crafts, colouring, games and Bible stories. We usually start in the Church at 11am for the Sunday Service and disappear into the Sunday School after the second hymn. (Call me on 601247 for more details).

**Our service dates for the next three months are as follows (all at 11am):**

<b>March 4th</b>	<b>Roy Harris</b>
<b>March 11th</b>	<b>United service at Parish Church</b>
<b>March 18th</b>	<b>Stuart Fuller</b>
<b>March 25th</b>	<b>Rev Rob Blackhall</b>
<b>April 1st</b>	<b>David Ley – Sacrament – Easter Sunday</b>
<b>April 8th</b>	<b>United Service at Parish Church</b>
<b>April 15th</b>	<b>Jim Wood</b>
<b>April 22nd</b>	<b>Local Arrangement</b>
<b>April 29th</b>	<b>Dave Watson</b>
<b>May 6th</b>	<b>Rev Rob Blackhall - Sacrament</b>
<b>May 13th</b>	<b>United Service at Parish Church</b>
<b>May 20th</b>	<b>Duncan Withall</b>
<b>May 27th</b>	<b>United service at Parkham Chapel</b>

**May God bless you all     Cathy Ley**



## FOUR PAWS PARLOUR

Buda Farm, Langtree Canine First Aid qualified

Professional Dog Grooming Services

City & Guilds level 3 qualified

Breed standard and pet cuts

Puppies welcome

Hand stripping

Full groom

[www.fourpawsparlour.co.uk](http://www.fourpawsparlour.co.uk)

Call Steph to make a booking

**07977 602580**

**City &  
Guilds  
Qualified**

Passionate about giving a high  
standard service to cater for your  
requirements and your dogs needs!



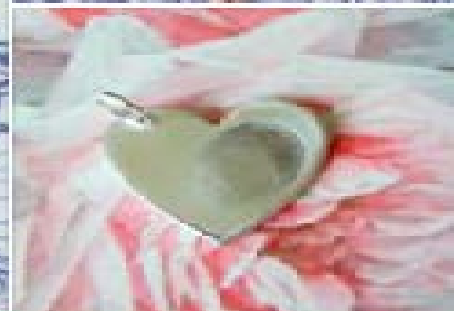
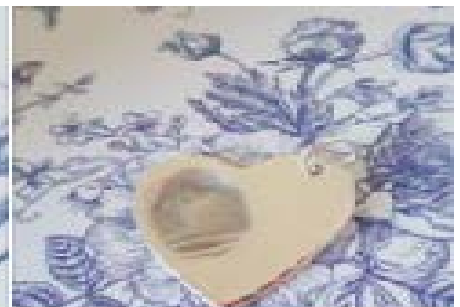
**New Nursery in Langtree**  
**A and D Weller Plants & Trees**  
**Open Sat & Sun 1pm – 5pm**

All home grown from seeds & cuttings

At Hammas Farm, Langtree EX38 8NY

Tel: 01805 601606

[amanda@hammasfarm.co.uk](mailto:amanda@hammasfarm.co.uk)



## *Silvery Moon Jewellery*

Handmade personalised silver jewellery in Langtree

For details contact Helen - [helen.n.hinchliffe@gmail.com](mailto:helen.n.hinchliffe@gmail.com)

or search Facebook for 'Silvery Moon Jewellery'

## So what's on at Langtree Parish Hall?

Hoorah! The toilet facilities are now complete and look great. We have had lots of positive comments from visitors to the Hall on them. Thanks to Clark Bonfield and his team for doing such a professional job. Our annual general meeting was held back in November when the annual accounts for the year ending September 2017 were presented. These are published in the newsletter. Only a third of the cost of the toilets is included in this account and the other 2 staged payments will appear in the accounts for September 2018. You will notice that grant money has been credited to the account and this is for the completion of the changing room block. We were very fortunate in receiving £16200 from Torridge New Homes Bonus Scheme, £6000 from Langtree Parish Council, £2500 from The Balsdon Trust and £500 from The Norman Family Charitable Trust. Unfortunately work to start on the interior has been very protracted due to various reasons including the very late fitting of a window by the developers which meant that swallows were nesting inside, and new building regulations which has meant that the old plan done back in 2012 is out of date! A new plan of the interior has been done with specifications and will go out to 3 contractors for quotes to complete. An additional grant of £15000 has been obtained from Grantscape through Coastal Recycling and this will be used for the changing room and works to the recreation field including fencing and goal posts.

A drop in meeting was held back in November 2017 to gauge opinions on how the land at the rear of the Parish hall could be used. Part of the land is earmarked for a football pitch and the developers are obliged to drain and seed it. I understand that a contractor to do this has been appointed but as yet do not know a start date. Ideas included a dog walking area around the perimeter and an agility area, and a multi use games area (MUGA) Once the field has been drained and seeded these other ideas will be pursued.

A further grant is being applied for to remove one of the windows and install a bifold door onto a large patio at the rear of the building giving direct access onto the field. Lovely on a summer's evening to soak up the view! Let's hope we get some.

At the time of writing the pantomime is being rehearsed. The Parrots of Penzance written by Andrew Yates is being performed on 15th, 16th, and 17th February. Tickets from £5.00. Dame Patsy's seriously unhygienic Cornish Pasty factory is under threat as ferreter Bill arrives to deal with the vermin problem. Meanwhile wreckage from a ship wreck reveals Edmundo and Consuela, two giant Peruvian parrots and the race to capture them descends into panto fun.

We are again one of the venues for North Devon's Big Breakfast in aid of the North Devon Hospice. Our date is Sunday 4th March and includes a full English breakfast with cereal, juice, fruit, toast and tea and coffee. Please book if you can with me, Sue 01805601602 with the approximate time as this helps in ordering sausages etc. The suggested donation is £7.00. Under 5s free, primary children £3.00.

There are a number of private celebrations being held at the hall through February, March and April including 2 birthday parties, a Christening, 3 weddings, 2 charity dinner and music, Rotary games night, and an end of season celebration for Swimming club..

Events open to all at the Hall are

**Thurs 15th, Fri 16th, Sat 17th Feb** Pantomime The Parrots of Penzance  
**Thursday 1st March** in association with Beaford Arts the Lost Disc (see flyer in newsletter) 7.30pm £7.50  
**Friday 2nd March** 7.30pm Charity Quiz in aid of Shelter Box  
**Sunday 4th March** 9am – 12.15pm Big Breakfast in aid of North Devon Hospice £7.  
**Friday 23rd March** Easter Bingo in aid of Friends of the Park Eyes down 7.30pm  
**Sunday 8th April** Spring Lunch from 12.30pm Roast, desert, cheese glass of wine or juice, tea /coffee £14.00. Booking essential! 92 Have booked already.

*Finally welcome to all the new comers to the Parish. Regular groups and societies are listed at the back of the magazine but for private bookings please contact me - Sue on 01805601602 for information.*

Langtree Parish Hall  
 Unaudited Receipts and Payments Account  
 Year Ended 30th September 2017

<b>Receipts</b>	<u>Note</u>	<u>2017</u>	<u>2016</u>
Fundraising Income			
Entertainment		1045	2198
Bar Sales		31258	30479
Food Sales		17092	14278
Draw/Auction etc		2502	1751
Hire of Hall		19839	16585
Donations and Grants	1	23147	50
EDF - VAT Refund		0	2181
EDF - Feed in Tariff		6126	3152
		<u>101009</u>	<u>70674</u>
 <b>Payments</b>			
Fundraising and Expenses			
Bar Supplies		16391	16485
Food and Kitched Supplies		3921	3993
Entertainment		1867	2859
Cleaning Materials		4335	2848
Light and Heating		7180	6451
Insurance		1337	1300
Water Rates		1828	3014
Professional Fees		450	450
Office Expenses		1126	112
Licenses		365	359
Miscellaneous		432	553
Repairs and Renewals	2	10531	12255
Donations		20	451
Website Expenses		134	104
WiFi		703	639
		50620	51873
Assets Purchased	3	13889	3116
Total Payments		<u>64509</u>	<u>54989</u>
Net Receipts and Payments		<u>36500</u>	<u>15685</u>
Cash Funds Brought Forward		<u>60326</u>	<u>44641</u>
Cash Funds Carried Forward		<u>96826</u>	<u>60326</u>

Langtree Parish Hall  
Year Ended 30th September 2017  
Notes on the Accounts

1 Donations and Grants received comprise the following:

Torrige District Council	16200
Langtree Parish Council	6000
Norman Family Trust	500
D Daniel	378
Sundry	69

---

£23,147

---

2 Repairs and renewals includes £3160 paid to Pat Mitchell and Son  
in connection with work carried out on the Pavillion

3 Assets Purch Buildings - Payment on account of new toilets

---

£12,868

Fixtures and Fittings	
Tables and Trolley	851
Vacume Cleaner	170

---

£1,021

---



*Christina Thomas*  
**Hair Stylist**

**CUT AND BLOWS**  
**COLOURS**  
**HAIR EXTENSIONS**

21 HEATHLAND VIEW  
STIBB CROSS

**TO BOOK AN APPOINTMENT CALL ON:**

01805601910  
07875753971

### **Hobby Group**

Hobby Group – By Sylvie Smith...

We are the “Crafty Women”  
You’ll find us every week  
“Crafting” in the Leader room  
Come and take a peak.

You’d get a happy welcome  
With coffee tea and treats  
Why not bring a friend along?  
As we have lots of seats!!!!

We make assorted items  
Hardly any are the same.  
So why not bring your craft along  
And start your rise to fame!  
Hobby Group

We meet every Tuesday morning at 10.30am in the Leader room, finishing at 12.30. It’s just £1 a morning which includes tea/coffee and biscuits, and sometimes cake! It’s not all craft of course, I mean, we have lots to discuss after all we have the world to put right!!!

Any queries call Sylvie 01805 601485.



Sponsored by



## **Please support North Devon Hospice and Big Breakfast 2018!**

Please come along and support your local Big Breakfast at:

Langtree Parish Hall  
Sunday 4th March 9.00am- 12.15pm

Delicious Big Breakfast £7.00 donation  
all inclusive including fruit, cereal,  
tea/coffee, toast and Full English.  
Booking preferred– please phone 01805 601602 or  
welcome on the day!

You can be sure of a warm welcome so please support our generous Big Breakfast organisers if you can. The money raised through Big Breakfast, which is generously sponsored by Phillip Dennis Foodservice, will help North Devon Hospice care for local people who are suffering from the impact of cancer and other life-limiting illnesses. All hospice services are provided completely free of charge, but it costs £4million each year to care in this way.



## History Group

Our History Group has had a busy & interesting year.

A number of our long term residents have shared memories of growing up in Langtree or of working here.

They've told us how different school and family life was and about community activities also. Many precious memories have been recorded.

Mike has made a few videos of life and nature in the North Devon area which make fascinating viewing.

We've had a visit from our honorary New York member, Pat Root who got us started on the Parish churchyard project a few years ago, and we have been involved in research concerning battles away from the western front during WW1, culminating in the showing of a film on the subject.

We meet on the fourth Wednesday of each month other than August and December, at 7.00 in the leader room of our Parish Hall, you are welcome to join us if these kind of things would interest you.

Are you aware there is a book about this Parish which tells the story of how we came to be the Parish we are. 'Langtree Parish History and Memories' is available for £5.00 from me on 01805 601228 - Margaret Knapman

## Torrige District Neighbourhood Watch

Torrige NHW covers the areas of Bideford, Holsworthy and Torrington and we are proud that it is one of the safest places in England and Wales. Our aim is to help the police to keep it as a very low crime area by "increasing the awareness of crime without increasing the fear of crime". The public plays a vital role in helping the police to reduce crime and NHW is a popular way for people of all ages and backgrounds to get involved.



It is a proven fact that neighbourhoods covered by a Watch scheme tend to be less likely to become victims of burglary and other crimes. Watch schemes can vary in size from just two or three residents up to several dozen on an estate or block of flats and the schemes help to foster neighbourliness and community spirit which go towards building better communities. For further information and contacts please look at our website at: <http://torridgenhw.ourwatch.org.uk> or call Tom Carrick, our Chairman, on 01237 474031

The Parish Hall Players Present:

# The Parrots of Penzance

By Andrew Yates  
at Langtree Parish Hall



Thursday 15th February	7.30pm	Tickets £5	
Friday 16th February	7.30pm	Tickets £6	
Saturday 17th February	2pm	Tickets £5	
	and	8pm	Tickets £7

To book tickets call 01805 601602

## **District Councillor David Hurley**

Since writing my last report for Langtree News the one thing about the weather that has changed is that the high winds have mostly abated. The rain however doesn't seem to want to stop. Speaking to several local people who have lived in Devon most of their lives, I'm told that this is the wettest they can remember. Maybe it just seems that way.

Langtree Meadows is still in the forefront of local news. Despite assurances last October that the affordables should be completed prior to Christmas, this obviously proved to be unfounded. Now we are looking at the end of March. If this is not the case I'm hopeful that progress will have been made in the correct direction as these houses are badly needed for local people who desperately want a place to live in, and call their home. I am liaising with TDC and the Parish Council, and in turn the builders, to try and get some tangible progress to this development.

The new building next to Riverbank House in Bideford where the main offices of TDC are housed has now formally been opened and named. Called Riverside it is now home to the Planning Department, Enforcement and Building Control amongst others. The building is proving popular as a working environment with staff. The space vacated by the aforementioned departments is now being converted in order for the remaining sections of the Council to move from Bridge Buildings to join their colleagues, and therefore all be located in one area. One Department not moving to Riverbank is Waste and Recycling who will remain at Westcombe in Bideford for the near future. Moving all the Bridge Building staff to one site will bring further savings to the Transformation programme in addition to the £850,000 already saved by previous measures.

I was listening to a debate on Radio Devon recently and the subject was potholes. The usual complaints were heard, all I might say were valid. We all know that our roads are in a poor state and I don't think there will be any improvement in the near future. I must say, in my experience and reading online and in the press, roads in this Country are, in general, in a poor state. We are not the only ones to suffer. When I heard a statement from DCC during this debate that only 2% of "A" roads, and I think he said 3% of "B" roads were affected by potholes, I wondered where these figures had come from. Obviously the state of the surface on the Stibb Cross to Holsworthy road (A388) wasn't included, nor the road past Rosemoor in the direction of Winkleigh (A3214) where the centre has broken up. If you wish to report a problem, and I encourage you to do so, <https://new.devon.gov.uk/roadsandtransport/report-a-problem/> is the place to head to. Potholes, parking problems, floods plus other Highways related problems can be reported here. You can remain anonymous if you wish to do so. Rest assured that I will continue to press our County Councillors and Highways Engineers to fix problems in our locality as soon as possible.

New Homes Bonus, which has provided over £750,000 in grants to the Torridge area over the past two years is to continue for a third year. Unfortunately the amount of funding available has reduced by over £100,000 leaving around £230,000 to be bid for by local groups this year. As a result of reduced funding, new rules have been applied. A maximum bid of £10,000 is allowed (£30,000 last year) and Organisations cannot bid for more money

this year if they received £10,000 or more last year. Full information and forms are on the TDC website.

On to the thorny subject of planning. You may be aware that the joint local plan, (N Devon and Torrridge), had submitted to the Planning Inspector, and it was hoped would be implemented last Autumn, was challenged by builders with regard to a 5 year housing supply. (Councils must show that they have enough land to sustain the apportioned number of houses over a 5 year period). The Inspector upheld the appeal and Hearings were conducted in early January. Satisfied that there is a 5 year land supply in the new plan, it was "requested" that a couple of other points in the new plan were altered. This will involve a public consultation and then analysis of the results which means a further delay before the plan can be implemented. Very frustrating. I'm told that it is hoped the plan can be in place in the early summer of this year. I really hope that this is the case. We all get annoyed when developers have planning applications approved and wonder just what the Planning Dept are up to. Unfortunately until the new plan comes into force developers cite the fact that the old, outdated plan that Torrridge planners have to work with, has no 5 year housing supply so it is difficult to reject an offer of land when it is proposed. This weighs heavily in an Inspectors decision at Appeal.

I'd like to finish this report by thanking Mike Evans for his years of service to Langtree Parish Council. Mike stood down as Parish Clerk in November and handed over the reins to Leigh Pollinger. I wish Leigh all success in his new role.

Until next time...

Kind regards,

David Hurley

## Langtree WI



Looking at our programme for this year there seems to be something for everyone. Our membership has grown, and as a consequence new ideas are a plenty!

Just taking a peek at the new programme tells us that next month which is February we will be busy crafting with Rose Wooldridge, followed by Food Preservations with Betty Dominy. Then in April we have "The Grand Bard of Exeter" Jackie Juno!

Later in the year I see we have a taste of Costa Rica and baking Pavlovas and Crème Brulées.

However, before then we have the annual "Group Competition", this year at Little Torrington. This is a chance to meet the members of all the WI's in our group. A night we look forward to immensely.

All welcome to come along as a visitor £4.00. any month.

***We meet at the Parish Hall every third Wednesday in the month at 7.30pm.***

NIGHT OF STUFF

# THE LOST DISC



Join fictitious Radio 6 music journalist Stuart Morecambe on his quest to find the legendary recording by three of the 20th Century's finest musicians.

Hear the sounds of swinging London from hepcat mystic dandy Roger LeFevre on his musical journey from the Yardbirds to Syd Barrett. Taste the bitter rhythm of Manhattan swing with Christmas-obsessed crooner Tony Noel. Follow the Lonesome cowboy AP Williams on the long trek from the Appalachians to the Grand Ole Opry.

Developed at Shoreditch Town Hall, **The Lost Disc** is part gig, part play, part comedy show that tells an alternative history of pop music.

As Stu narrates their story the characters spring into life on a hilarious and strangely moving trip through popular music of the 20th Century, taking in WW2, JFK, the Smiths at Glastonbury and Carnaby Street in the Swinging 60's, with a dazzling array of musical styles performed by a live band.

Written and performed by Perrier Winner Will Adamsdale (*The Joke*, *Jacksons Way*) and Ed Gaughan (*Quacks*, *Skeletons*) directed by triple Perrier nominee Tom Parry (*Badults*, *Pappy's Fun Club*).

**Thursday 1 March, 7.30pm,  
Langtree Parish Hall**

Tickets £7.50 (adult)

**01805 601602**

Doors 7pm. Bar. Raffle.

beaford**arts**

Age range/Suitability Contains  
some swearing - parental guidance  
Running time 2 x 45 mins

TICKETS AVAILABLE (PLUS BOOKING FEE) AT [WWW.BEAFORD-ARTS.ORG.UK](http://WWW.BEAFORD-ARTS.ORG.UK)



## **News from Langtree Community School**

Thank you to everyone who came along to support any of our Christmas events during December: our main school production, “The Troubadour’s Tale”, our Foundation Stage Christmas Production, our Carol Service or PTA Christmas Fayre. We feel sure you were as proud of our children as we were: learning lines and songs, as well as knowing when to get on, and off, the stage coupled with their bravery in performing in front of such large audiences. Thank you to everyone from the community who came and supported us.

MTA Vacancy. Our search for a new lunchtime team member continues, with a reminder that there is still a vacancy for a Mealtime Assistant to work alongside Andrea, Stacey, Sarah, Chelsey and Dawn. If this is something of interest to you, please come and ask us for details or click on our webpage for more information: [www.langtree.devon.sch.uk/](http://www.langtree.devon.sch.uk/) (Getting Involved/Vacancies).

Foundation Stage ‘Stay and Play’ Sessions: next sessions: Fridays 02 February and 02 March: 10.30am – 12noon Our Foundation Stage provides a happy and nurturing environment in which Nursery-aged children are sensitively and expertly prepared for mainstream school and school life. If you have a child of pre-Nursery age who is soon due to start with us, we would love you to come along to see for yourself what makes our class so special, and warmly invite you and your child to our ‘Stay and Play’ sessions on the first Friday of every month. The children will have a chance to play in the classroom, as well as play in the garden, and to mix with our current nursery children; an ideal opportunity for you and your child to experience our Foundation Class together,

meet some of our staff and become familiar with the Foundation environment. It's a good time to ask questions and talk to other families. You can come and view the well-equipped and comfortable facilities and observe, and take part in, play, interaction and development in a stimulating environment. We look forward to welcoming you between 10.30am and 12noon on the above dates.

One of our main events this term will be our Spring Show, due to take place in Langtree Parish Hall on Tuesday 27 March 2018 from 9.30am, when all classes will exhibit and showcase curriculum-linked or themed performances. Everyone is, of course, very welcome to come along.

**School: T : (01805) 601354 E: [admin@langtree.devon.sch.uk](mailto:admin@langtree.devon.sch.uk)  
W : [www.langtree.devon.sch.uk](http://www.langtree.devon.sch.uk)**



**LOGS** 

**GRASCOTT FIREWOOD**

**Quality Seasoned Firewood  
and Kindling**

SUPPLYING LOCALLY FOR OVER 15 YEARS  
SUSTAINABLY HARVESTED FROM OUR OWN FOREST

*Discount for Bulk Orders*

**Tel: 01409 281393**

E-mail: [info@grascottfirewood.co.uk](mailto:info@grascottfirewood.co.uk)  
[www.grascottfirewood.co.uk](http://www.grascottfirewood.co.uk)

## Langtree All Saints Church

**Team Rector: Revd Martin Warren, tel: 01409-281424**

**Team Vicar: Revd Susannah Metz, tel: 01837-810621**

Dear Friends,

I have a decision to make: February 14th – romantic dinner or ashes as Lent starts?

In case you haven't noticed on your calendar, Ash Wednesday, the start of Lent, clashes with Valentine's Day. Oh dear! It just doesn't seem to fit: Lent with all its emphasis on abstinence and repentance and Valentine's with its thoughts of pleasure and enjoyment. What a choice!

But maybe they can go together. For the purpose of Lent is to draw us into a deeper relationship with God; to put other things aside and give ourselves to knowing God's love better, and expressing our love for him better.

And isn't that Valentine's too? – to grow in love? To put other things aside and give yourself afresh to the one you love and who loves you. Maybe Ash Wednesday and Valentine's can go together – both a celebration of love.

It's only a problem when we see God as having a downer on us. So often we portray him as the one who wants to spoil things; to deny us the good things of life; to stop us doing the things we enjoy. What a gloomy picture of God. No wonder we shy away from Lent. But Christian experience has been the opposite. God wants to bless us; to give us fullness of life. He wants to move us on from dependence on things that don't really satisfy to really enjoy the world in which we have placed us. He doesn't want to push us down but to lift us up.

So Lent can become not just one Valentine Day, but six weeks worth of Valentine's Days that outdo Valentine's Day itself. Sounds amazing.

But still not sure about the romantic dinner v ashes!

Happy Ash Wednesday/Valentine's,

Martin Warren.

### Services at All Saints

11th Feb	11.00am	Holy Communion
18th Feb	11.00am	United Service (at Chapel)
25th Feb	9.30am	Holy Communion
4th Mar	9.30am	Morning Prayer
11th Mar	11.00am	Holy Communion
18th Mar	11.00am	United Service (at Chapel)
25th Mar	9.30am	Holy Communion
1st Apr	9.30am	Easter Communion
8th Apr	11.00am	Holy Communion
15th Apr	11.00am	United Service (at Chapel)
22nd Apr	9.30am	Holy Communion
29th Apr	11.00am	Holy Communion (at Newton St. Petrock)



## Langtree Parish Council Report

The last couple of months has seen the retirement of the parish clerk Mike Evans and the appointment of Leigh Pollinger in his place. Mike served the Council and the Parish for 12 years. He gave sage advice to a succession of chairpersons from Barry Neal to myself. We all have reason to be grateful to him. Leigh Pollinger has only lived in the village for a couple of years but is already known to many of you via various activities at the Parish Hall and is now taking great strides towards getting the council to act efficiently.

Last week Leigh, Pat Mitchell and myself met a representative of Devon Air Ambulance. Acquiring the field to the rear of the Parish Hall has made it possible for us to think about developing it as a night landing site for DAA. We will be applying for planning for a 'clever' lamp post on the field. When the need arises the approaching helicopter crew dial the phone number of the box of tricks at the base of the lamp post and this switches the light on illuminating the landing spot. All being well we should have this system up and running for the middle of May.

The affordable housing project trundles on. The whole project should be completed by the end of March according to the S106. Various promises have been made by various characters involved and we deal with these regularly at council meetings. Should you want to know the details I urge you to come along to these meetings. I find it difficult to believe that these properties will be available by the deadline bearing in mind the amount of building work that remains and the current lack of activity on the site. I am informed by TDC that the affordable housing will be priced in the region of £104,000.

Terry Attridge - Chair. LPC



**ACM**  
ALL COAST MEDIA

WEBSITE DESIGN  
BUSINESS CARDS  
LOCAL SERVICE

**Get a modern responsive website**

- Improve your Google search position
- Easily edit and update pages yourself
- Mobile and tablet device friendly
- Advanced booking systems available

See more examples at below at:  
[www.allcoastmedia.co.uk/variety](http://www.allcoastmedia.co.uk/variety)

**David Gubb** 07812 772638 / 601938  
BSc Hons  
Langtree, Torrington [hello@allcoastmedia.co.uk](mailto:hello@allcoastmedia.co.uk)

Crystal clear Nikon SLR photos  
Business cards and stationary  
A3 scanning and printing



## THE SHEARING SALON

SHEBBEAR

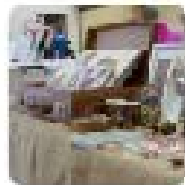
( Next to Southview Store and the Surgery )

*Ladies' and Gentlemens' Hairdressing.*

Call Lucy on 07920828181 for an appointment.



# LANGTREE INDOOR MARKET



## SUPPORTING LOCAL TRADERS



**EVERY THURSDAY**  
**10AM - 2PM**

Come along and browse our large range of stalls and meet our welcoming local traders.

We also offer a selection of delicious meals and hot and cold refreshments.

Find us at:

Langtree Parish Hall, Langtree, Near Torrington, EX38 8RH.

You will find:

Local Meat, Veg, Fruit, Flowers, Cakes, Jams, Pastries, Pickles, Pet Food, Fudge, Crochet, Jewellery, Forever Living Books, Cards, Paintings, Household Essentials, Woodwork, Candles, Scarves, The Body Shop, Books and lots more !



Find us at [www.facebook.com/langtreeindoormarket](http://www.facebook.com/langtreeindoormarket)



# WEST HEANTON LTD

## is Recruiting



West Heanton is a family run company based in beautiful countryside in Buckland Filleigh near Shebbear. We have been providing residential care for 25 years with the aim that care should be provided by a familiar face at regular times with a friendly, family feel. If this is something you feel passionately about we would really like to hear from you, experience welcome but not essential as full training is provided.

We have expanded and now provide home care support and day care for the local community and need flexible staff to help us provide for the changing needs of our clients.

### Meals on Wheels

We provide a hot meal delivery service with daily freshly cooked meals from the home to people living in our home care area

### Home Care

Providing care to people living in their own homes in the area shown on map.

- Staff paid per shift not per visit so travel time included
- Pool Cars provided so you don't have to use your own
- Provider for the NHS Devon Care's initiative

### Care Home and Supported Living

West Heanton has 23 bedrooms and 7 supported living apartments. We are able to support people as individuals with a range of needs including Dementia, Parkinson's disease and mobility challenges. Our aim is to create a homely comfortable atmosphere which meets people changing needs so that they can continue to live with us.

### Activities Hall

Providing daily entertainment and crafts for people from the home or from the local area to join us for the day.

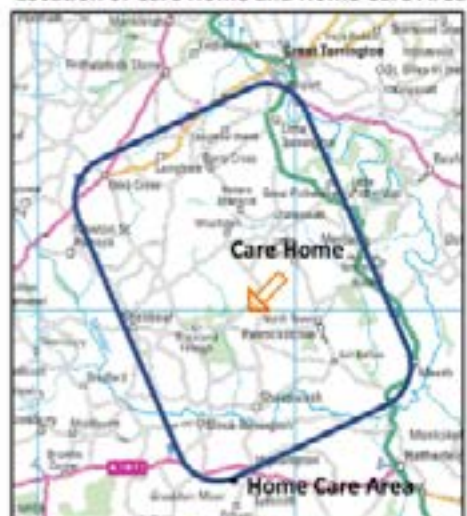
- Transport can be provided from the local area.
- Cooked Meal
- Dedicated Activities staff

### Employment Benefits

- Regular Shift patterns over two-week period
- 5.6 weeks Holiday per year
- No Zero hours contract unless requested
- Access to regular training and courses as well as support from the North Devon NHS Care Home Team
- Flexible approach to shifts via online rota to allow people to move, increase or decrease shifts
- Individual Contract hours to suit people's own circumstances



### Location of Care Home and Home Care Area



**For more information and enquiries contact**

**Tom Bond (Manager) on 01409 281754  
or send CV to [jobs@westheanton.co.uk](mailto:jobs@westheanton.co.uk)**

[www.WestHeanton.co.uk](http://www.WestHeanton.co.uk)

### **Fitness and Well Being**

Neil Harris – Physio & PT - 01237238819  
Torrington Hypnotherapy - 07814522591  
Yoga – Ruth Chambers - 01805 938132  
- 07789 020668

### **Pubs and Food Services**

Green Dragon Inn - 01805601 342  
Union Inn - 01805601626  
Stapleton Yoghurts - 01805601414  
West Heanton Meals on Wheels - 01409218754  
Marland Meats - 01805601245

### **Hairdressers & Beauty treatments**

Lucy Coles - 07920828181  
Christina Thomas - 01805601910  
Tina's Treatments - 07552676076

### **Builders and Trades**

Tim Langmead Builder - 01805601500  
Pat Mitchell & Son Builders - 01805601415  
Wayne Hill Painter - 01805625238  
S.D Martin – Plumber - 01409240240  
KJ Bromell – PVC Windows - 01288357020

### **Other Services**

P&S Sanders - 01805601280  
Peter Hearn Septic Tanks - 01805601286  
ACM Web Site Design - 07812772638  
Beamtree Interiors - 01805601785  
DES Mobile Repairs - 01805601546  
Jo Wilson Gardening service - 01805601444  
Qualified Math Tutor - 07884232308  
Accountant/Book Keeper - 07884232308  
GW Architects Ltd - 01409281362

### **Suppliers**

TT Fire Wood - 07884080171  
Bridgeman's - 01409261321  
Grascott Firewood - 01409281393  
West Heanton Care Service - 01409281754

### **Accommodation**

The Old Rectory B&B - 01805601602

### **Emergency Details**

Crime Stoppers - 0800 555111  
General Enquires is now - 101  
Out of Hours GP - 111  
Shebbear Surgery - 01409281212

Police email:  
melissa.baker@devonandcornwall.pnn.police.uk

### **Local Contacts**

Parish Hall Bookings - 01805601602  
Langtree Church - 01409281424  
Langtree Methodist Chapel - 01409281262  
Langtree Primary School - 01805601354

### **What's On in Langtree**

#### **Health & Keep Fit**

**Pilates** - PH (Term Time only) Mon 9:10am to 10:10am

**Body Blast** - PH, Mon 6:15pm to 7:15pm

**Yoga** – Leader Room, Wed 10am to 11-30am

**Short Mat Bowls** – PH

Mon 7:30pm - 9:30pm

Wed 1:15pm - 3:30pm & 7:30 - 9:30pm

(not in Summer)

**Shebbear Surgery Health Club**

Last Tue of the Month 2-3pm

#### **Clubs and Groups**

**Hobbies, Arts and Crafts Group** Tue 10:30 to 12:30 (PH)

**Parish Whist Drive** - £2 entry - 7.30pm (PH) - Fourth Thursday of the month

**Little Acorn's** Wed 9am to 12pm (PH) Term Time

**Woman's Institute**

7:30pm to 9:30pm - 3rd Wed of Month (PH)

**History Group**

7:00pm to 9:00pm – 4th Wed of month (PH)

**TGIF Club** 2nd Friday of Month, 3.15pm - 5.15pm (PH)

**Bible Study and Meal** – Thursday Evenings 7:15pm (MC)

**Langtree Market & Cafe** – Thursdays 10am to 2pm (PH)

#### **Other Services**

**Mobile Post Office** at the (PH) Car Park

Mon to Wed & Fri 11:40am to 13.05am

**Parish Council Meetings**

7:30pm to 8:30 – 2nd Thu of the Month

#### **Mobile Library**

**Langtree** on a Thurs - Parish Hall 10:40 - 11:15

**Stibb Cross** on a Wed - Union Inn 15:35 - 16:35